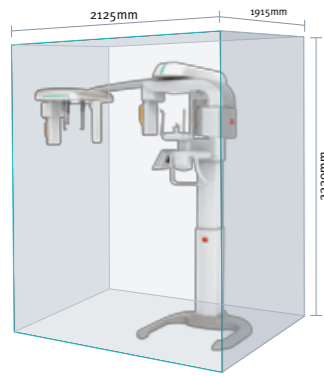


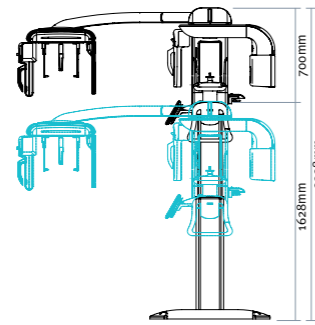
Dimensions

PaX-Flex3D_ Pano / CT / Ceph

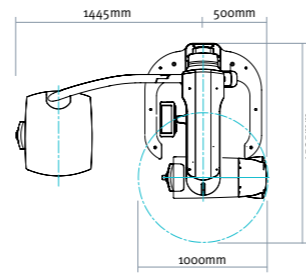
Recommended space



Front View

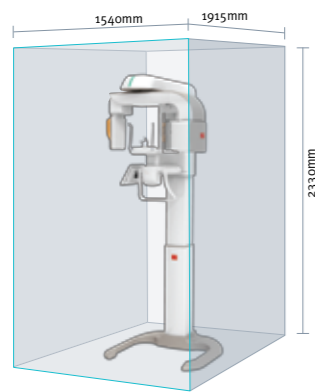


Top View

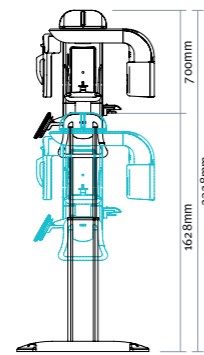


PaX-Flex3D_ Pano / CT

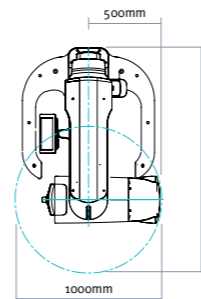
Recommended space



Front View



Top View



Specification

Function	3 in 1 Panoramic, CBCT, Cephalometric	Generator Voltage / Current	CBCT: 50-90 kVp / 2-10 mA Pano: 50-75 kVp / 2-9 mA Ceph: 50-85 kVp / 2-9 mA
CBCT sensor	CMOS Sensor	Rotating Angle	360°/240°
File Size	30MB (5X5/0.2 voxel) 72.8MB (8X5/0.2 voxel)	Dimension (WxDxH mm)	1945X1535X2328 (Pano+Ceph) 1000X1535X2328 (Pano)
Focal Spot	0.5mm	Option	-Auto Focusing -Ultra HD -LCD Touch Panel -Base
Scan Time	CBCT: 24sec (FOV 5X5) / 24sec(FOV 8X5) Pano: 9.8/13.5/18sec (Fast/Normal/Ultra HD) Ceph: 12.5-13.5sec	Voxel Size	0.12 / 0.2
FOV Size(cm)	- 5X5 (Single) / Stitching: 8.5X5 - 8X5 / Stitching: 12X5 - 12X8.5 (multi: 5X5, 8X5, 8.5X8.5, 12X8.5)	Patient Position	Standing/ Wheelchair accessible
Recon Time	less than 1 minute (standard)		

* The specifications are subject to change without prior notice.

Dental Pioneer
VATECH



PaX-Flex3D

The Convenient Flexible System

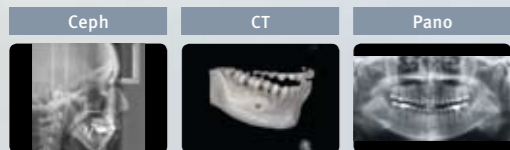
The Convenient Flexibility



Begin successfully with PaX-Flex3D. It's solution.

Values at a glance

- ▶ **Practical 3 in 1 System**
- CBCT + Real Panoramic + Cephalometric
- ▶ **Flexible & Simple Upgrade**
- System Upgrade: Panoramic to CBCT
- FOV Upgrade: 5X5cm to 8X5cm, 12X8.5cm
- ▶ **Advanced Panoramic Imaging Technology**
- Ultra HD - Auto Focusing
- ▶ **Stitching Solution**
- Easy way to extend the FOV size



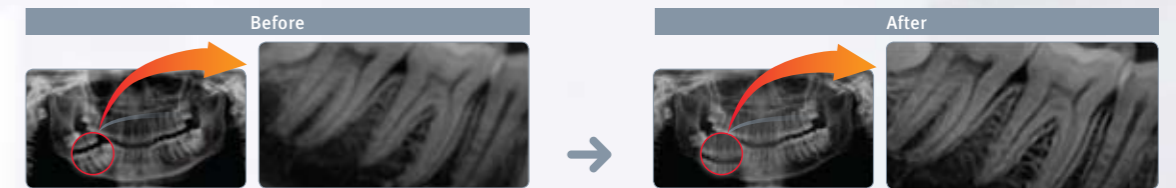
Flexible & Simple Upgrade : Expand your Diagnostic Area

PaX-Flex3D offers simple and convenient system upgrade. By attaching the CBCT sensor on the sensor holder of the panoramic unit, a 3D diagnostic image will be available to you instantly making it more affordable than ever before. That is genuine flexibility without the need to purchase a separate CBCT unit. With this flexibility, simple & easy FOV upgrades from small FOV - '5X5cm or 8X5cm' to middle FOV - '12X8.5cm' are available. By simply adding additional larger FOV sensors, you can see more anatomical structures that enables you to do more precise and extensive diagnosis.



Ultra HD(High Definition) Panoramic Image

With VATECH's new innovative Ultra HD technology we offer you more enhanced features and advantages. With its unique 5.2lp/mm compared with the 2.5lp/mm guide line of DIN for panoramic image, clearly PaX-Flex3D provides more superior and higher image quality. (Option)



Clinical Importance Ultra HD Panoramic image, the newest technology from us, offers the exact image of caries without any distortion, especially in the lower area of enamel. Furthermore, you can precisely check the actual volume of pulp without magnification from the panoramic image. Also, after the implant surgery, it shows clear osseointegration of fixture as well as trabecular, alveolar bone and the detail of the Lamina Dura.

Stitching Program

Stitching program shows a wider image by automatically merging two or three localized volumes. Obtain a wide 3D acquisition by operating the stitching program without upgrading the CT machine. It's very useful in multiple implant treatment cases.

General	Stitching
5X5, 3 volumes	8.5X5
8X5, 2 volumes(OPTION)	12X5

